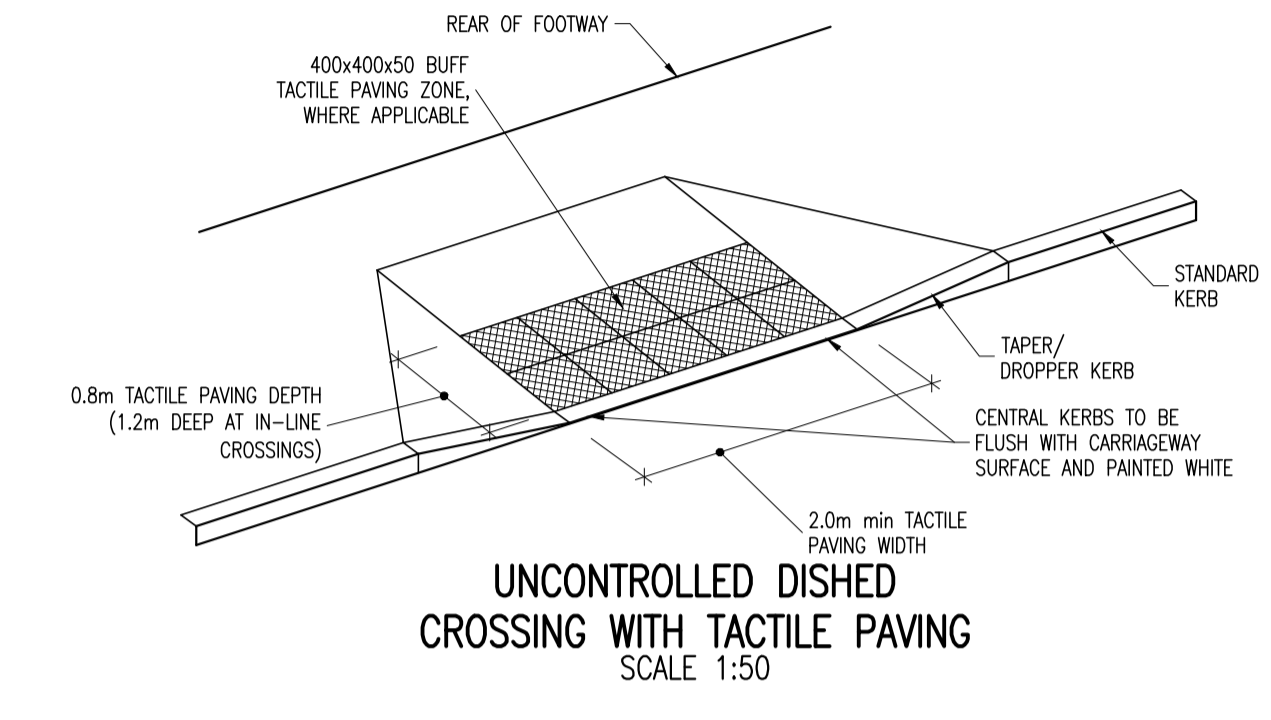
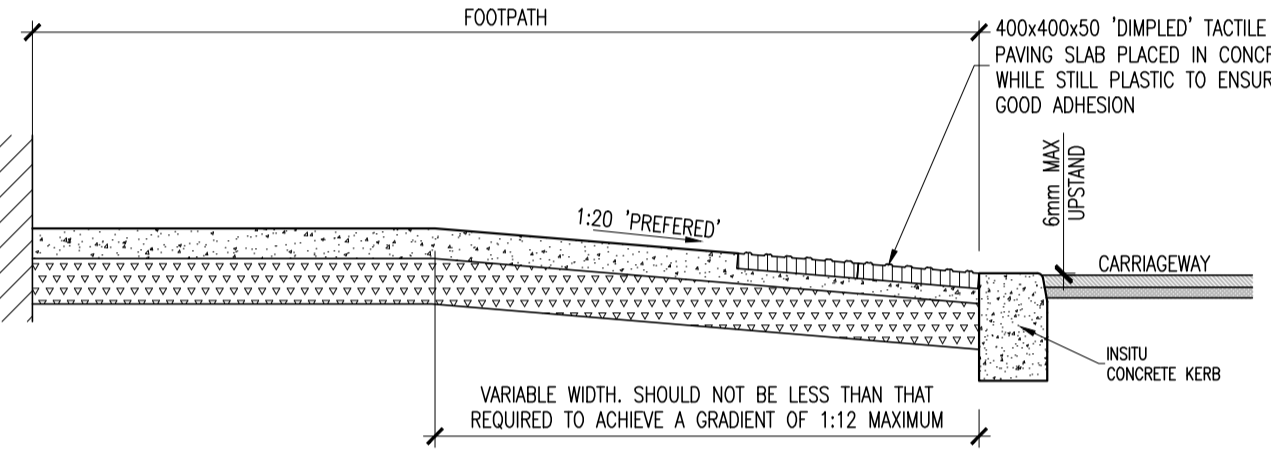


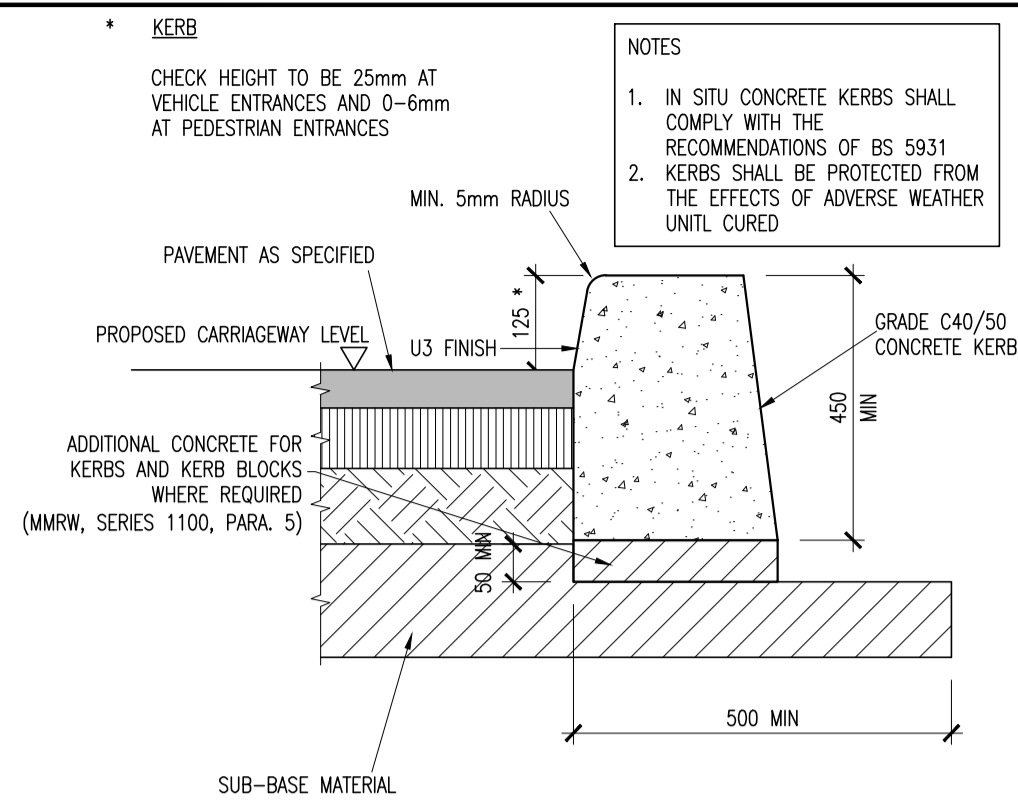
CONTROLLED DISHED CROSSING WITH TACTILE PAVING
SCALE 1:50



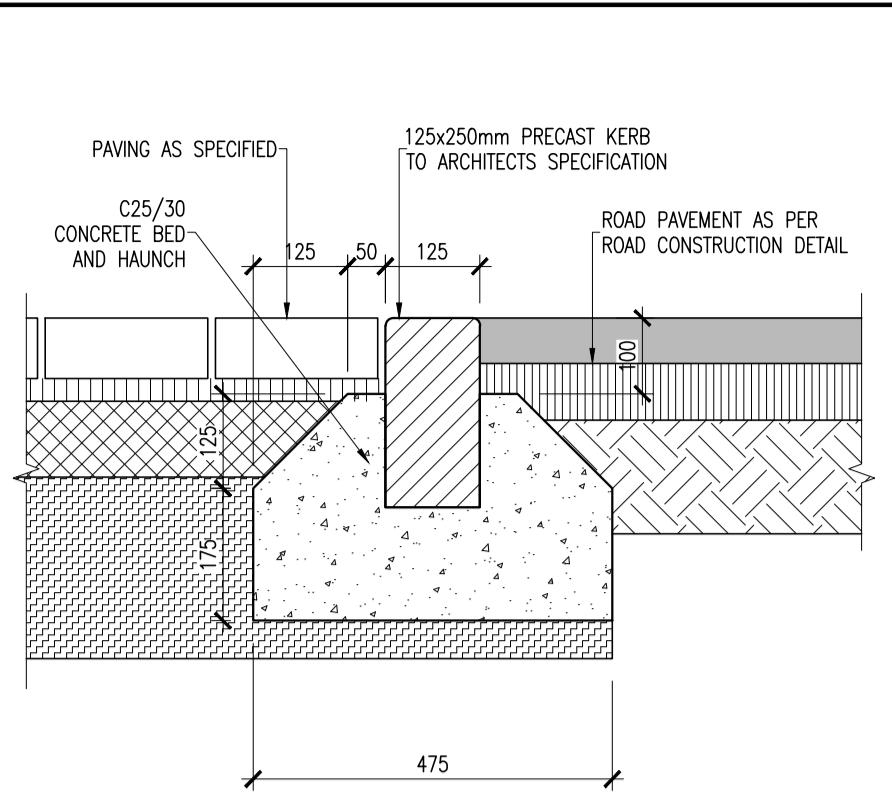
UNCONTROLLED DISHED CROSSING WITH TACTILE PAVING
SCALE 1:50



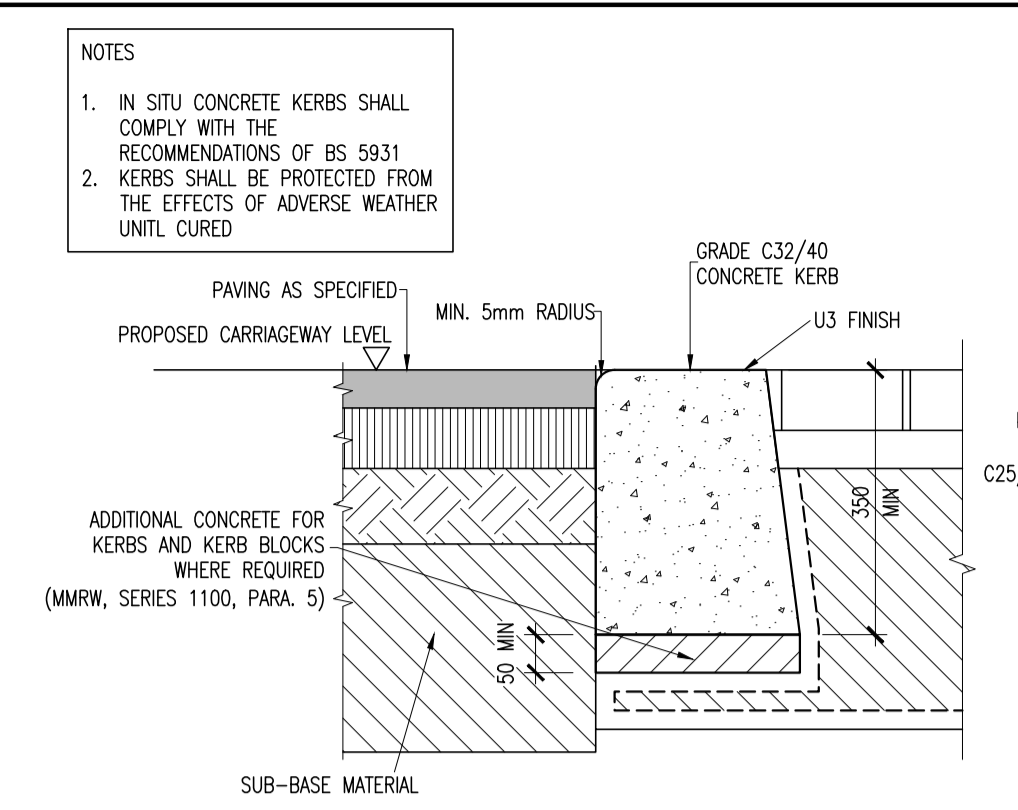
TYPICAL SECTION THROUGH DISHED CROSSING
SCALE 1:25



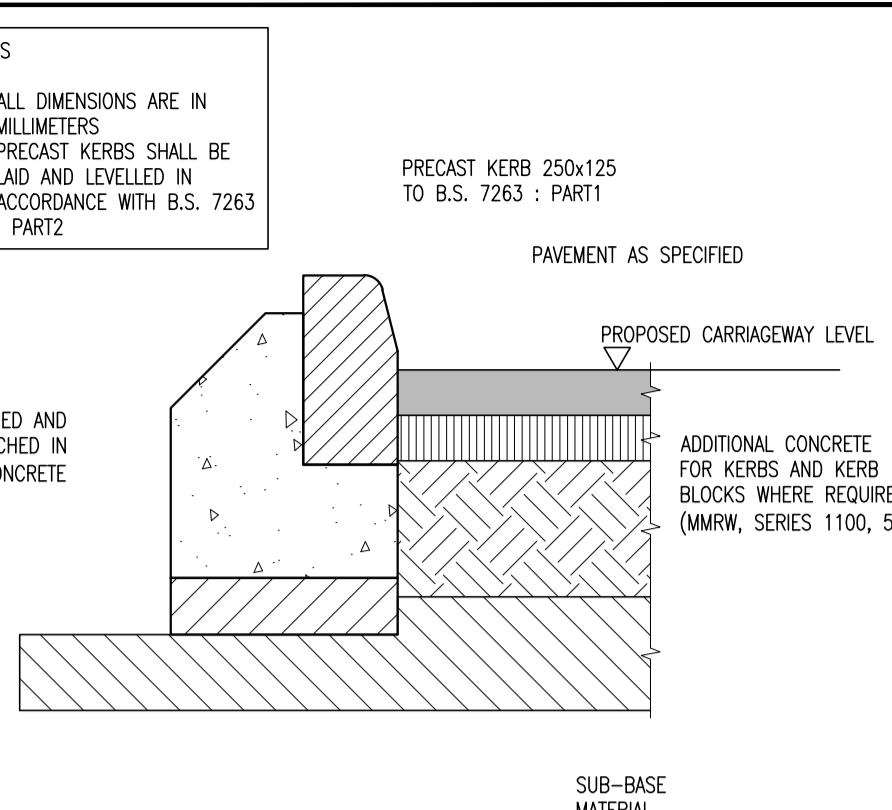
INSITU CONCRETE KERB DETAIL
SCALE 1:10



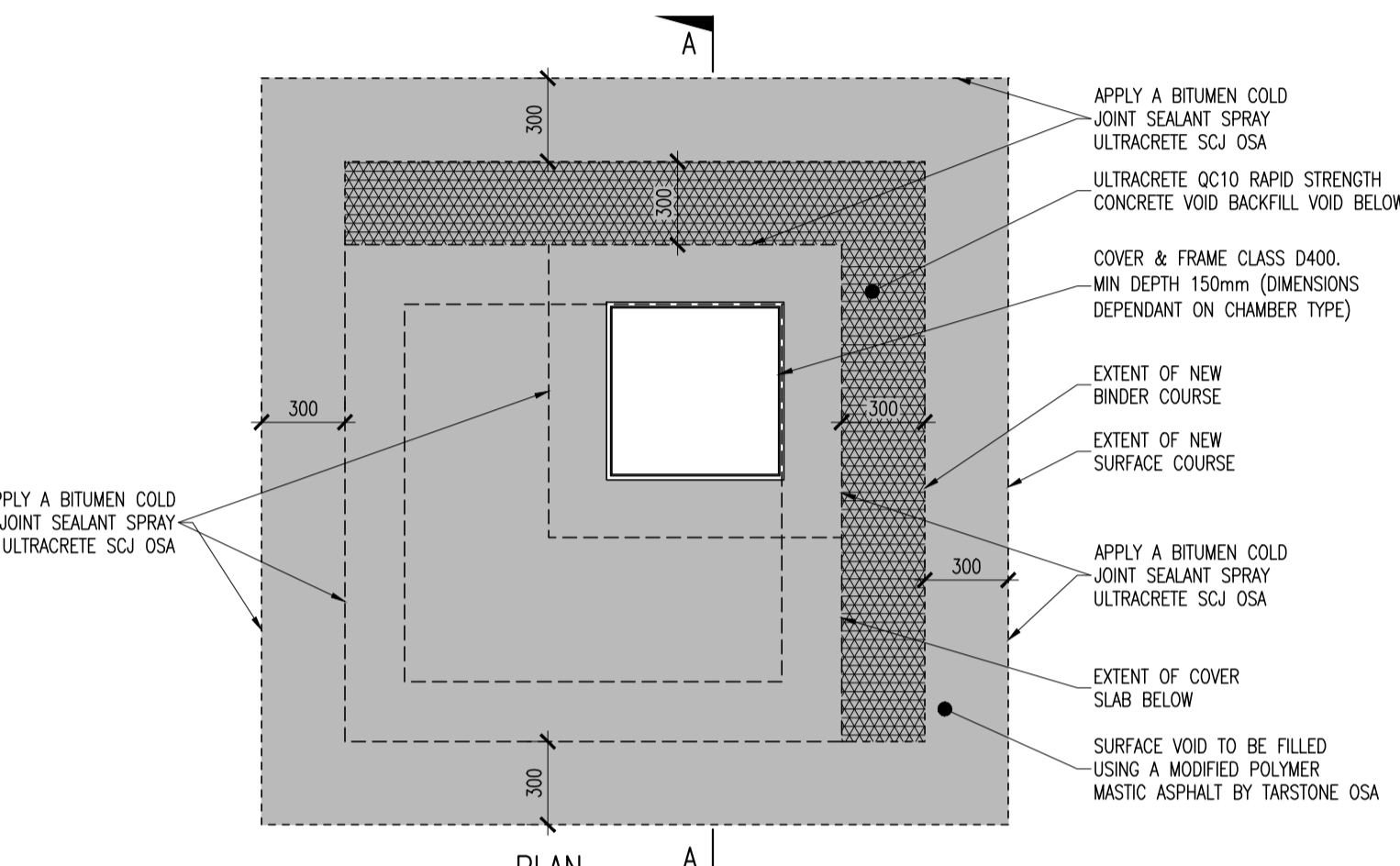
EDGE KERB DETAIL (DBM TO PAVING BLOCK)
SCALE 1:10



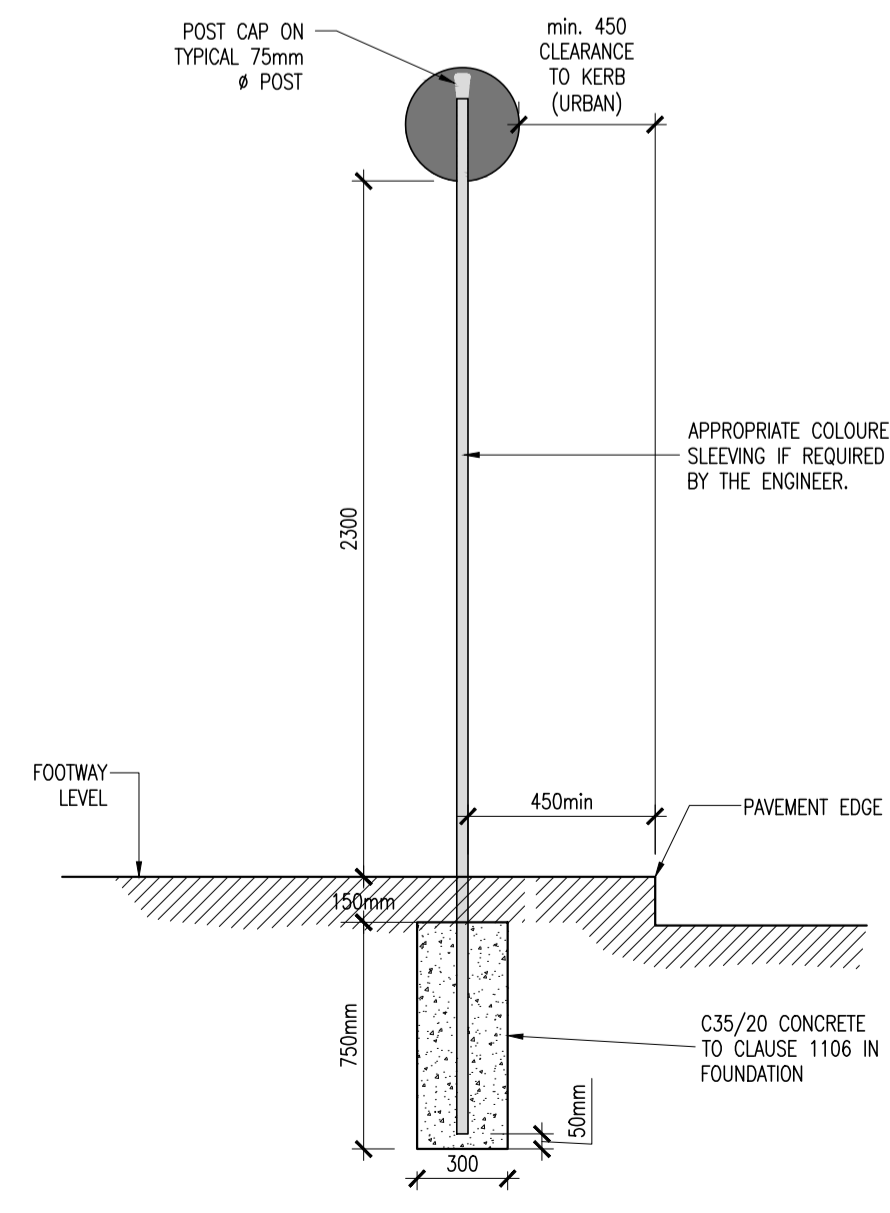
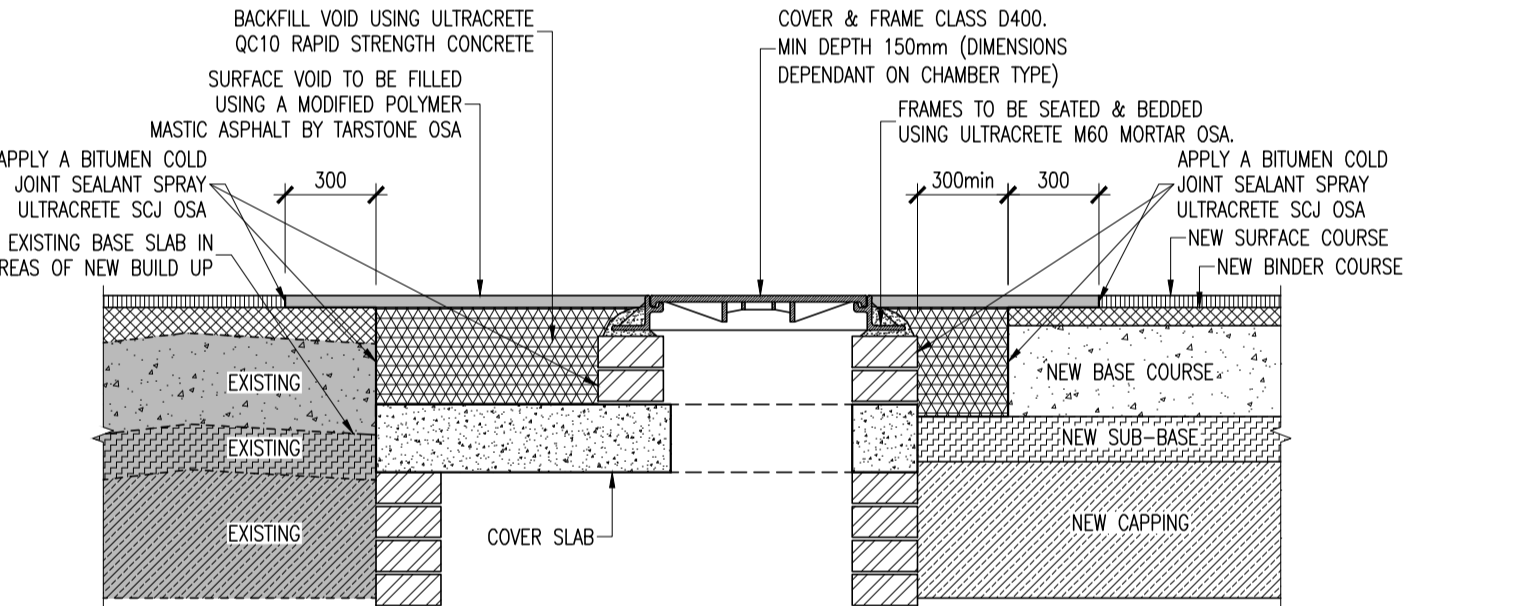
FLUSH KERB DETAIL
SCALE 1:10



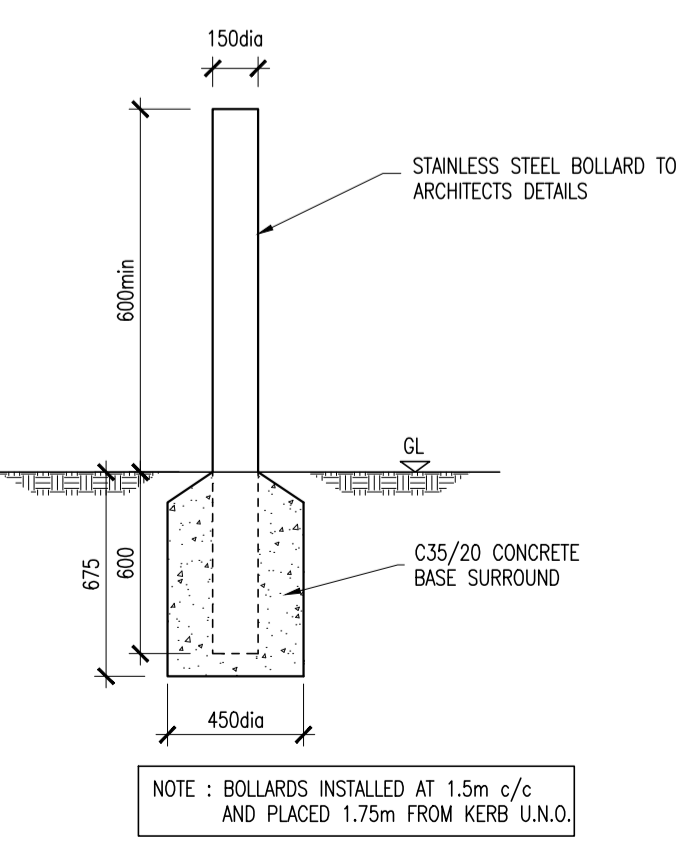
PRECAST KERB DETAIL
SCALE 1:10



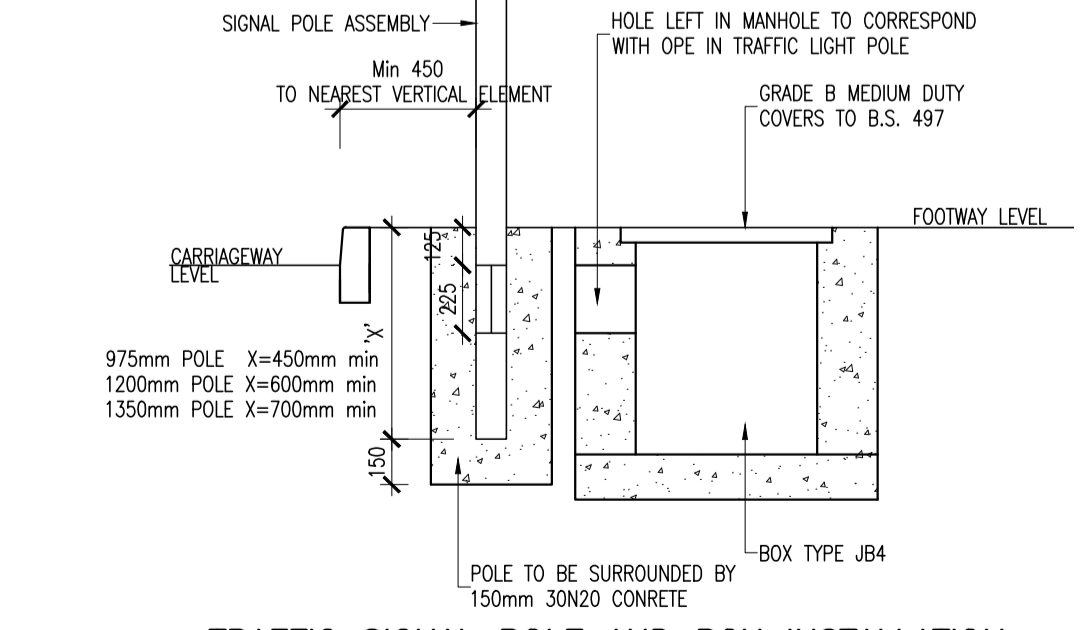
TYPICAL MANHOLE COVER WITH MASTIC SURROUND
(TO BE APPLIED AT ALL EXISTING & NEW MANHOLES)
SCALE 1:25



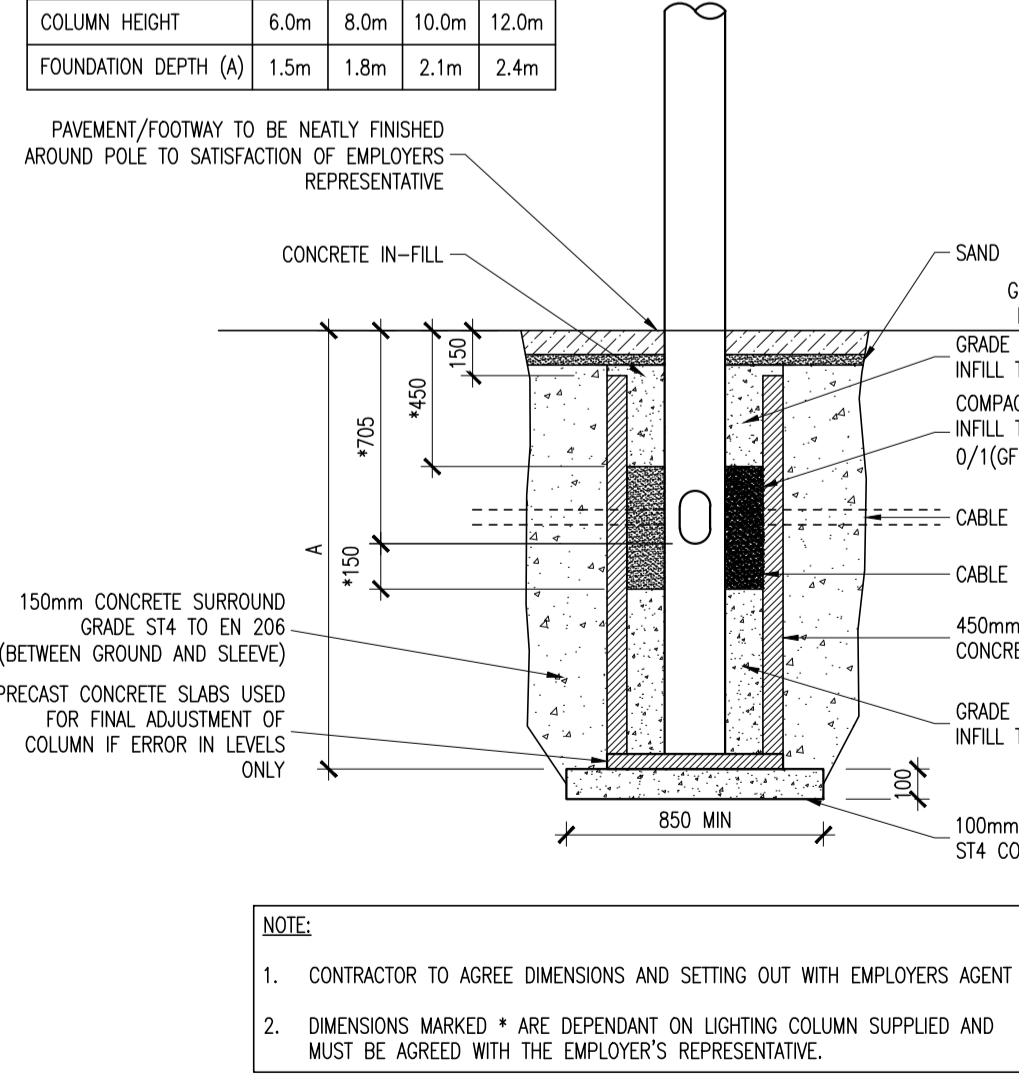
ROAD SIGN (SINGLE POST)
SCALE 1:25



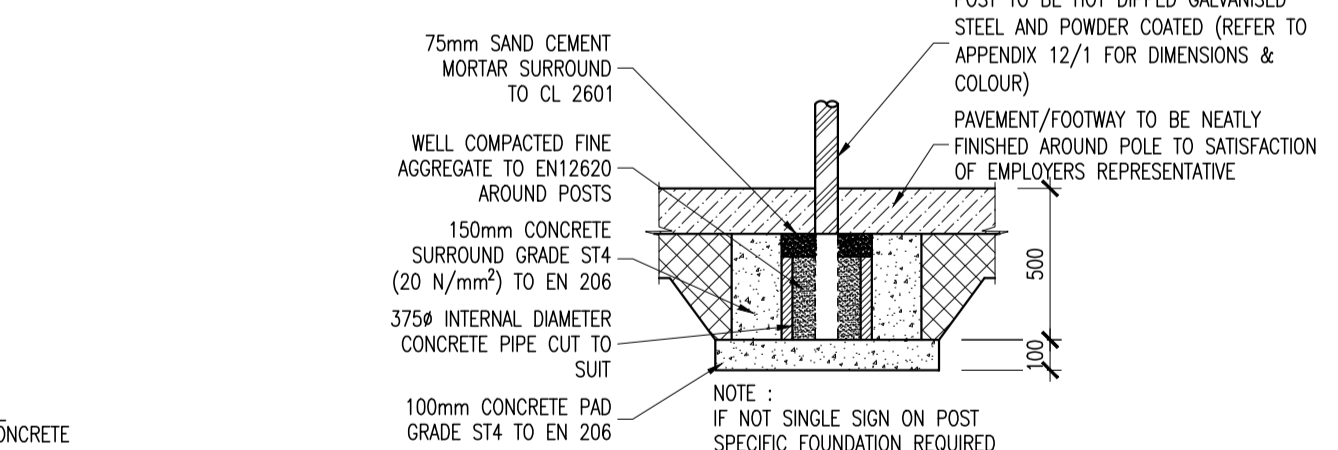
TRAFFIC BOLLARD DETAIL
SCALE 1:25



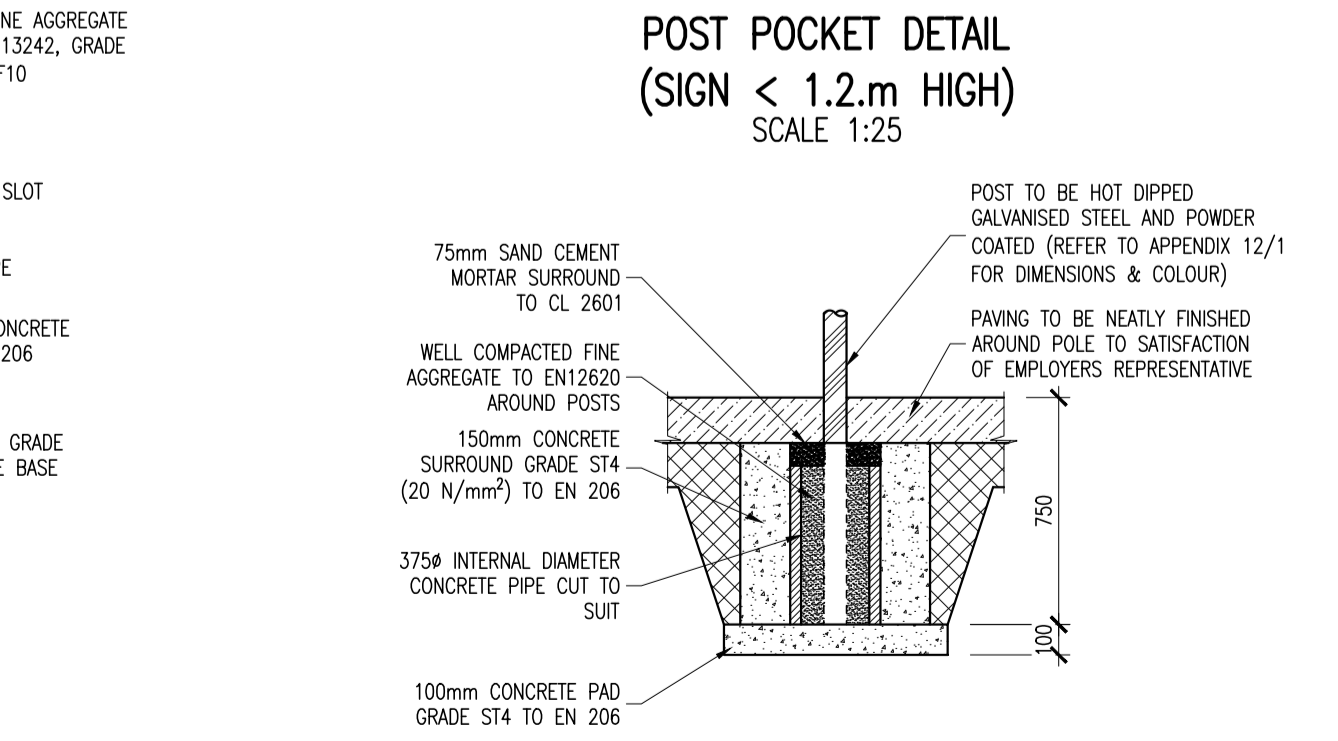
TRAFFIC SIGNAL POLE AND BOX INSTALLATION
SCALE 1:25



TYPICAL LAMP STANDARD FOUNDATION
SCALE 1:25



POST POCKET DETAIL (SIGN < 1.2m HIGH)
SCALE 1:25



POST POCKET DETAIL (SIGN > 1.2m HIGH; MAX 3.0m TO TOP OF SIGN) STANDARD SIGNS ONLY; MAX SIGN AREA = 1.0m²
SCALE 1:25

© COPYRIGHT OF THIS DRAWING IS RESERVED BY DBFL CONSULTING ENGINEERS. NO PART SHALL BE REPRODUCED OR TRANSMITTED WITHOUT THEIR WRITTEN PERMISSION.

ON ORIGINAL

NOTES:

- CLOSE GRADED SURFACE COURSE MACADAM SHALL COMPLY WITH THE REQUIREMENTS OF CLAUSE 912 OF THE NRA'S 'SPECIFICATION FOR ROAD WORKS' AND SHALL SATISFY THE REQUIREMENTS OF TABLE 9/2. IT SHALL BE LAID & COMPACTED IN ACCORDANCE WITH CLAUSE 901 & CLAUSE 702
- DENSE BITUMEN MACADAM BINDER COURSE SHALL COMPLY WITH THE REQUIREMENTS OF CLAUSE 906 OF THE NRA'S 'SPECIFICATION FOR ROAD WORKS' & SHALL SATISFY THE REQUIREMENTS OF TABLE 9/1. IT SHALL BE LAID & COMPACTED IN ACCORDANCE WITH CLAUSE 901 & CLAUSE 702.
- SUB-BASE MATERIAL SHALL COMPLY WITH CLAUSE 808 GRANULAR MATERIAL TYPE B OF NRA'S SPECIFICATION FOR ROAD WORKS (SRW) & SHALL SATISFY THE REQUIREMENTS OF TABLE 8/4 & 8/2.
- SUB FORMATION & CAPPING MATERIAL SHALL COMPLY WITH CLAUSE 613 OF THE NRA'S 'SPECIFICATION FOR ROAD WORKS' & SHALL SATISFY THE REQUIREMENTS OF TABLE 6/1 & 6/2.
- STONE BUNDING WITH 2-6.3mm AGGREGATE SHALL MEET THE FOLLOWING GRADINGS, IN ACCORDANCE WITH IS EN 12342

BS SIEVE SIZE (mm)	% BY MASS PASSING
14	100
10	98-100
6.3	80-99
2.0	0-20
1.0	0-5

- CRUSHED STONE WITH 4-20mm AGGREGATE SHALL MEET THE FOLLOWING GRADINGS, IN ACCORDANCE WITH IS EN 12342

BS SIEVE SIZE (mm)	% BY MASS PASSING
40	100
31.5	98-100
20	90-99
10	25-70
4	0-15
5	0-5

- ANY ROADS PROPOSED TO BE USED FOR CONSTRUCTION TRAFFIC ARE TO HAVE INCREASED DEPTH OF SUB-BASE FOR THE DURATION OF CONSTRUCTION IN ACCORDANCE WITH DBFL SPECIFICATIONS.
- ALL WORKS SHALL BE COMPLETED IN ACCORDANCE WITH THE REQUIREMENTS OF THE LOCAL AUTHORITY.
- ALL GEOTRIDS TO BE LAID IN ACCORDANCE WITH MANUFACTURERS SPECIFICATIONS.
- ALL PERMEABLE PAVING SUB-FORMATION TO BE LAID TOWARD DRAINAGE PIPEWORK.

NOTES:

- EDGES OF EXISTING CARRIAGEWAY TO BE CUT BACK BY 0.5m WITH A ROTARY SAW TO FORM A VERTICAL FACE AND PRIMED IN ACCORDANCE WITH CLAUSE 920 (NOTE 1).
- WHERE THE BASE COURSE IS TO BE LAID IN TWO LAYERS, THE UPPER LAYER OF BASE COURSE SHOULD BE STEPPED INTO THE EXISTING PAVEMENT BY 1.0m WITH THE BINDER COURSE AND SURFACE COURSE TO BE EACH STEPPED IN A FURTHER 1.0m MIN RESPECTIVELY.

NEW CONSTRUCTION OVERLAY

EX. PAVEMENT SURFACE

EX. PAVEMENT TO REMAIN

EX. PAVEMENT TO BE BROKEN OUT

REGULATING COURSE IF REQUIRED (DEPTH VARIES)

TOP OF EXISTING PAVEMENT AFTER PLANING

WITHIN 24 HOURS OF JOINT BEING FORMED SEAL USING AN APPROVED SEALANT TO CLAUSE 903.29 NOTE 1

NOTES:

- EDGES OF EXISTING CARRIAGEWAY TO BE CUT BACK BY 0.5m WITH A ROTARY SAW TO FORM A VERTICAL FACE AND PRIMED IN ACCORDANCE WITH CLAUSE 920 (NOTE 1).
- WHERE THE BASE COURSE IS TO BE LAID IN TWO LAYERS, THE UPPER LAYER OF BASE COURSE SHOULD BE STEPPED INTO THE EXISTING PAVEMENT BY 0.3m WITH THE BINDER COURSE AND SURFACE COURSE TO BE EACH STEPPED IN A FURTHER 0.3m MIN RESPECTIVELY.

NEW CONSTRUCTION OVERLAY

EX. PAVEMENT SURFACE

EX. PAVEMENT TO REMAIN

EX. PAVEMENT TO BE BROKEN OUT

REGULATING COURSE IF REQUIRED (DEPTH VARIES)

TOP OF EXISTING PAVEMENT AFTER PLANING

WITHIN 24 HOURS OF JOINT BEING FORMED SEAL USING AN APPROVED SEALANT TO CLAUSE 903.29 NOTE 1

NOTE:

ALL FACES OF COLD UPSTANDING EDGES SHALL BE TREATED TO CLAUSE 903.26 NOTE 1

PT	DATE	DESCRIPTION	BY	CHKD
PT	03-12-19	FOR AEP APPLICATION	JVS	BK

PLANNING

DESIGNED	SPB	PREPARED	JVS
DATE	OCT 2019	CHECKED	BK

DBFL Consulting Engineers

DBFL office Ormond House, Upper Ormond Quay, Dublin 7, Ireland. PHONE +353 1 400 4000 FAX +353 1 400 4050

WATERFORD office Unit 2, The Chandlers, 1-2 O'Connell Street, Waterford, Ireland. PHONE +353 51 308 5500 FAX +353 51 844 913

PROJECT

PROPOSED DEVELOPMENT AT CORNELSCOURT

DRG. TITLE

TYPICAL ROAD CONSTRUCTION DETAILS SHEET 2

CLIENT

CORNEL LIVING LIMITED

SCALE	AS SHOWN @A1	FILE REF.
DRG. NO.	180208-DBFL-XX-XX-DR-C-2011	P1